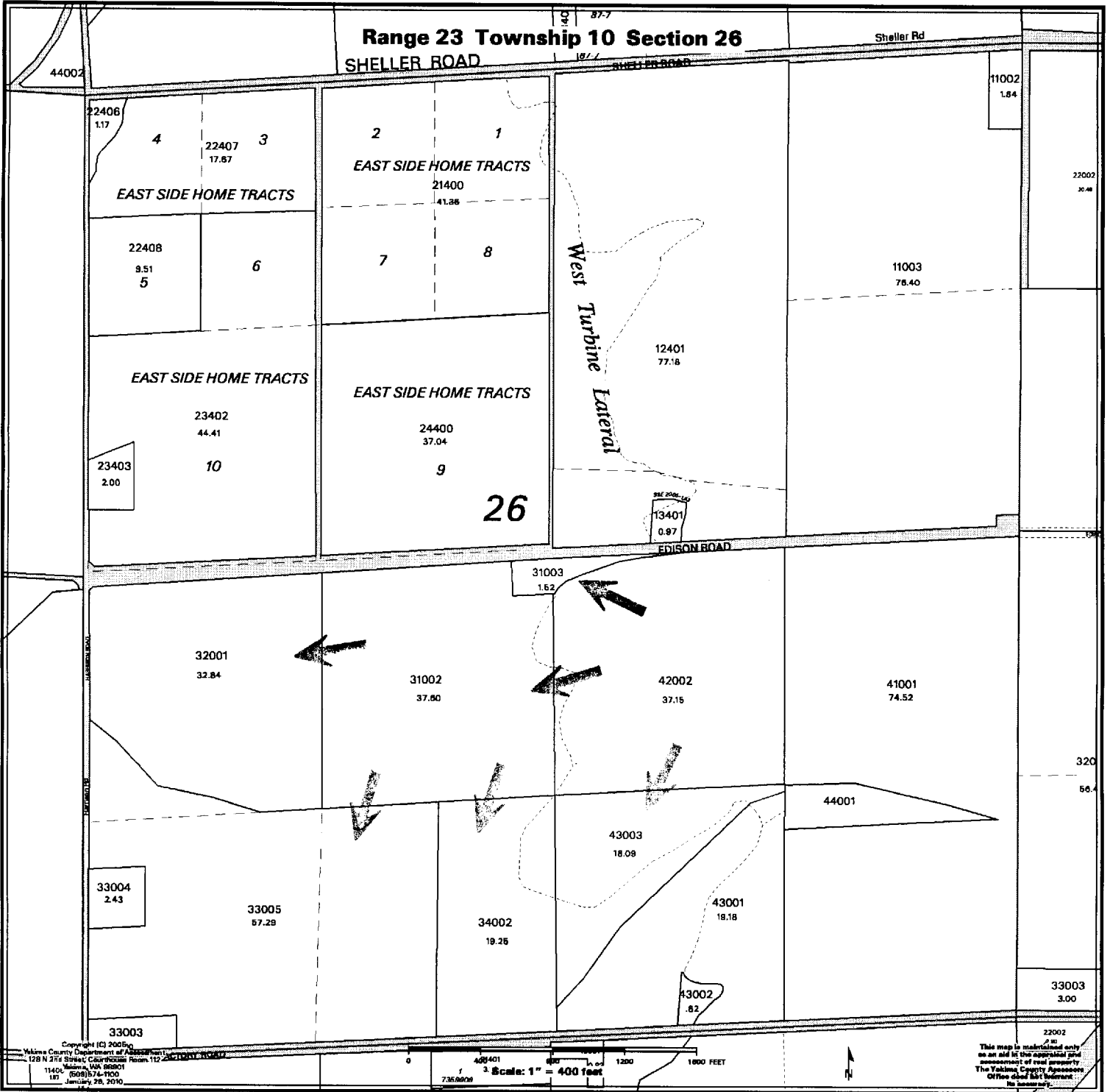


**Range 23 Township 10 Section 26**  
**SHELLER ROAD**



Copyright (C) 2005  
 Yakima County Department of Assessment  
 128 N 2nd Street, Central Business Room 112, Yakima, WA 98901  
 1140L (509) 574-1100  
 187 January 28, 2010



This map is maintained only as an aid in the appraisal and assessment of real property. The Yakima County Assessor's Office does not warrant its accuracy.