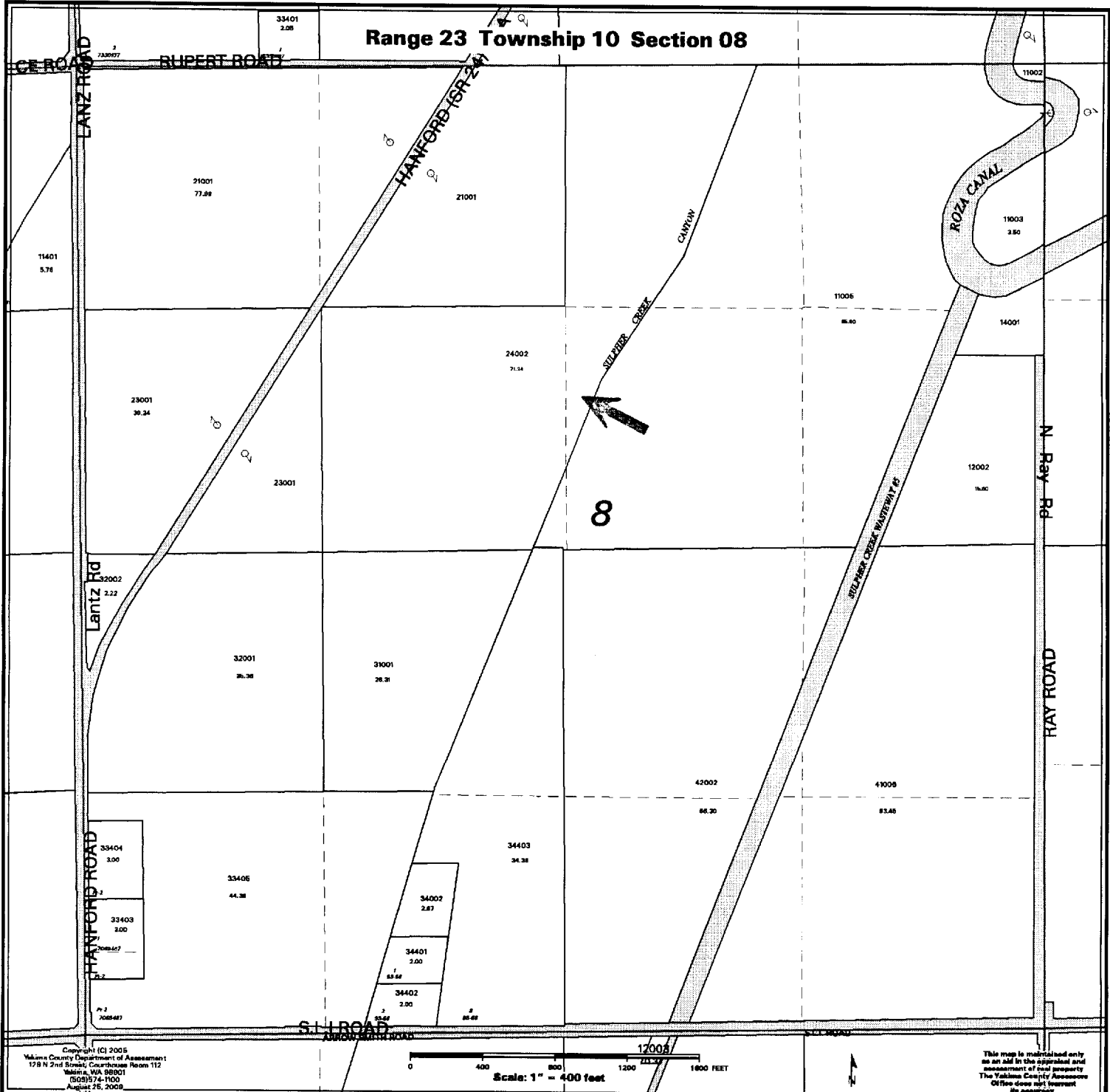
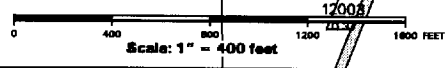


Range 23 Township 10 Section 08



Copyright (C) 2005
Yakima County Department of Assessment
179 N 2nd Street, Courthouse Room 112
Yakima, WA 98901
(509)574-1100
August 26, 2008



This map is maintained only
as an aid in the appraisal and
assessment of real property.
The Yakima County Assessor
OR file does not warrant
its accuracy.